



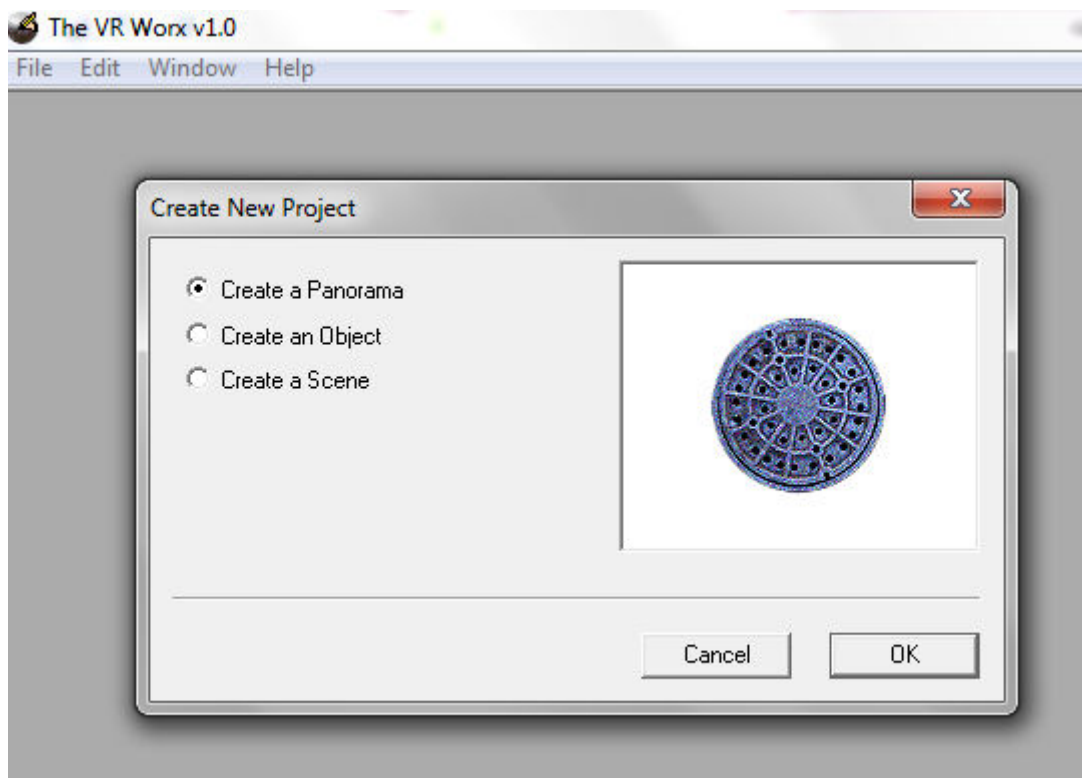
**Laboratório de Geoprocessamento da Escola de Arquitetura -
UFMG**

Elaboração - Júnia Borges

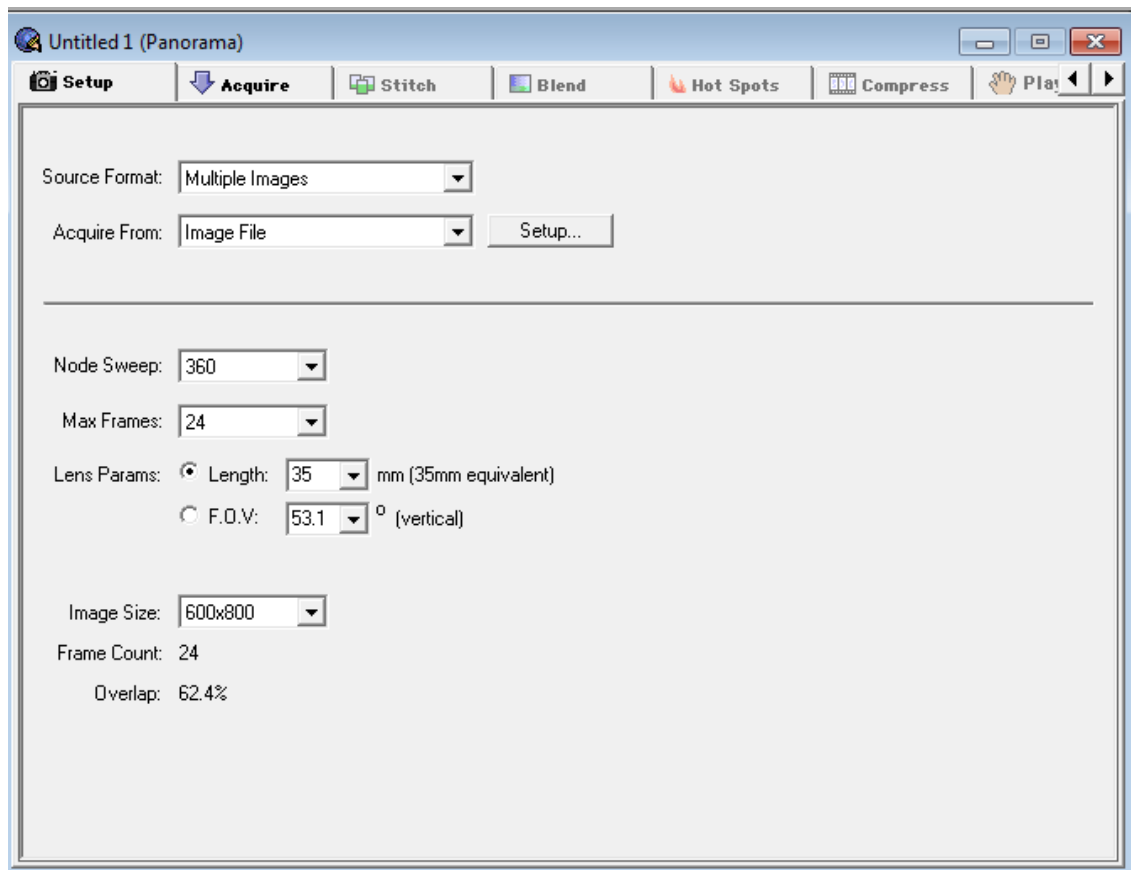
Orientação - Ana Clara Mourão Moura

Apostila VR WORKS

CRIANDO PANORAMAS



Setup



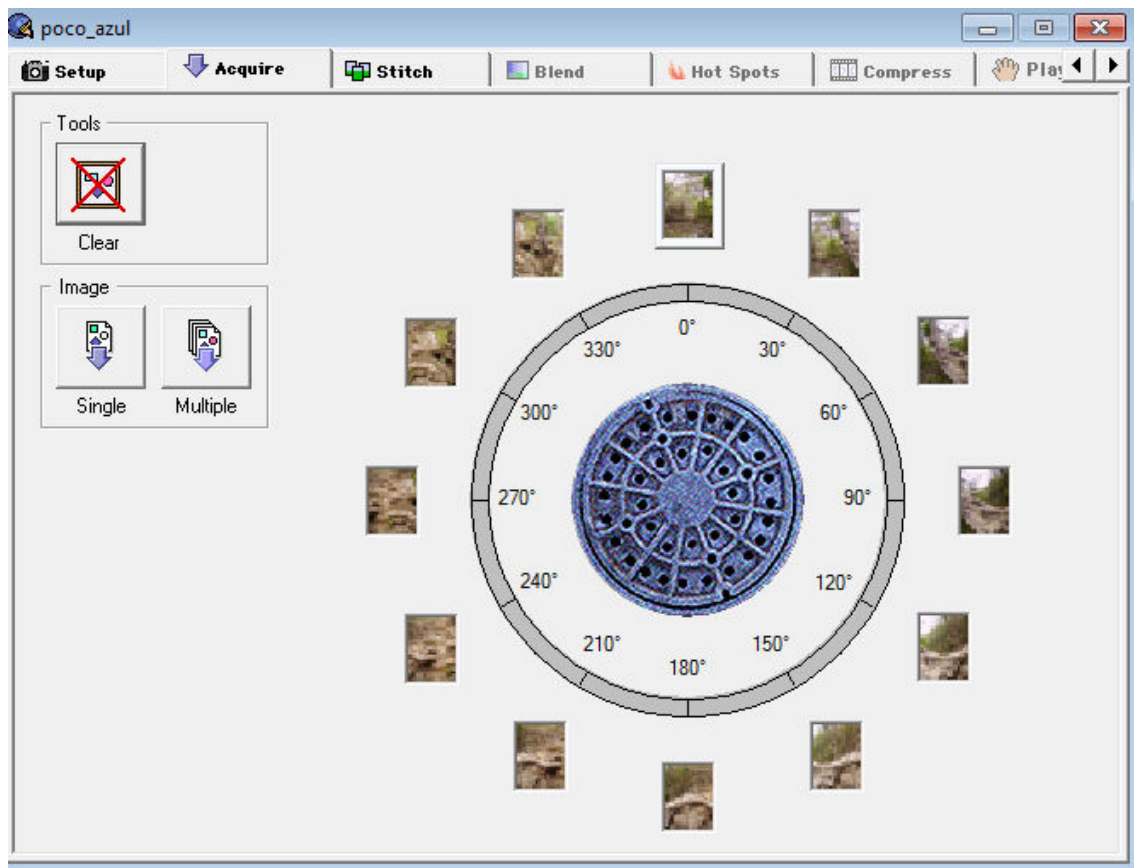
Em vôos de fotogrametria o recobrimento geralmente é de 60%, com superposição lateral de 20% a 40%.

24 fotos 35 mm –F.O.V 53,1°

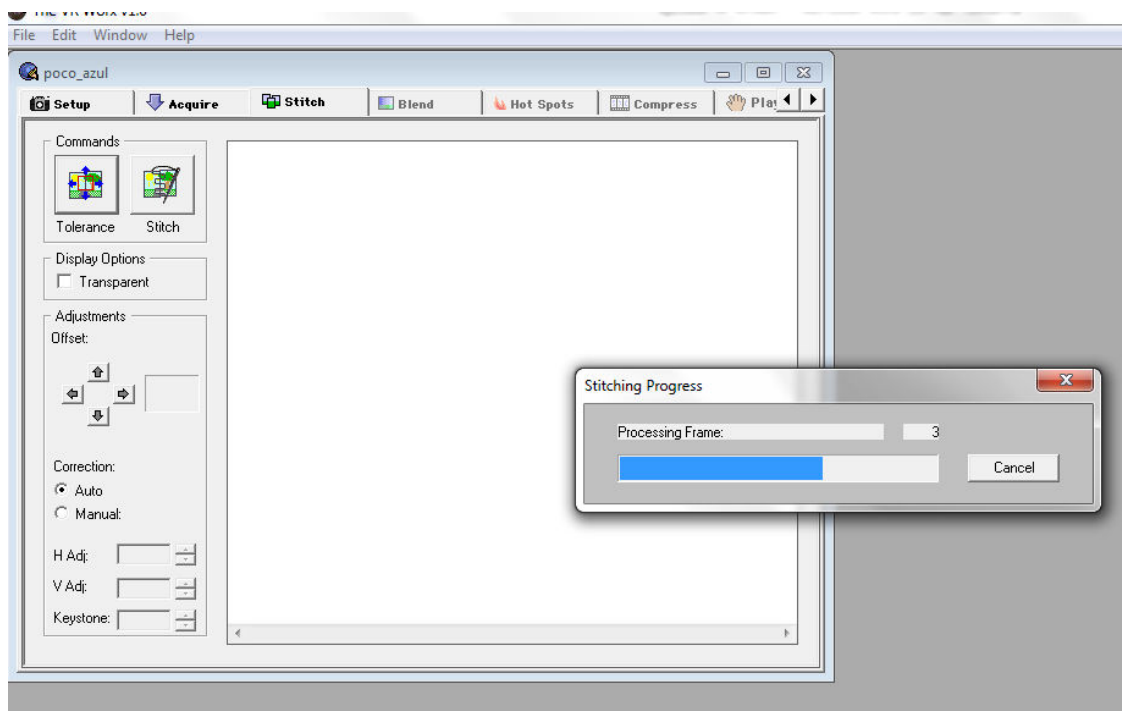
$53,1^\circ \times N = 360^\circ$

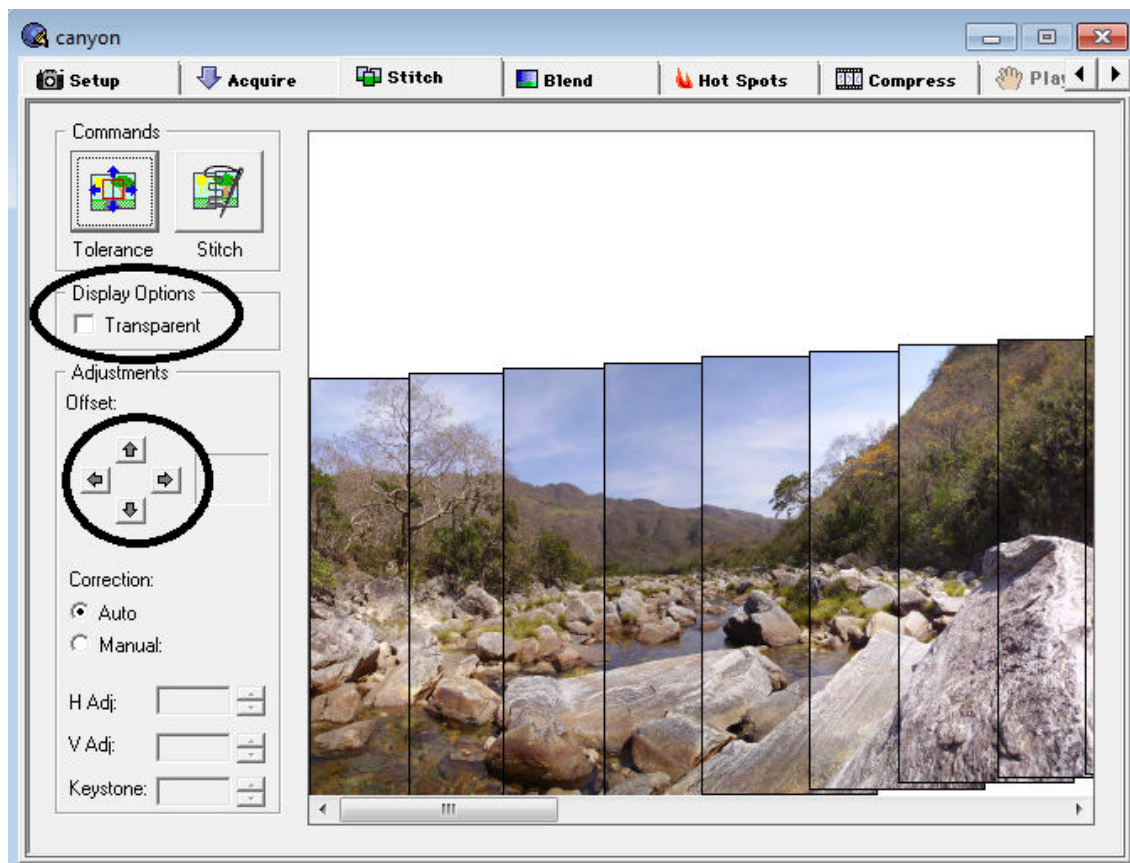
$N = 6,77$

Acquire:

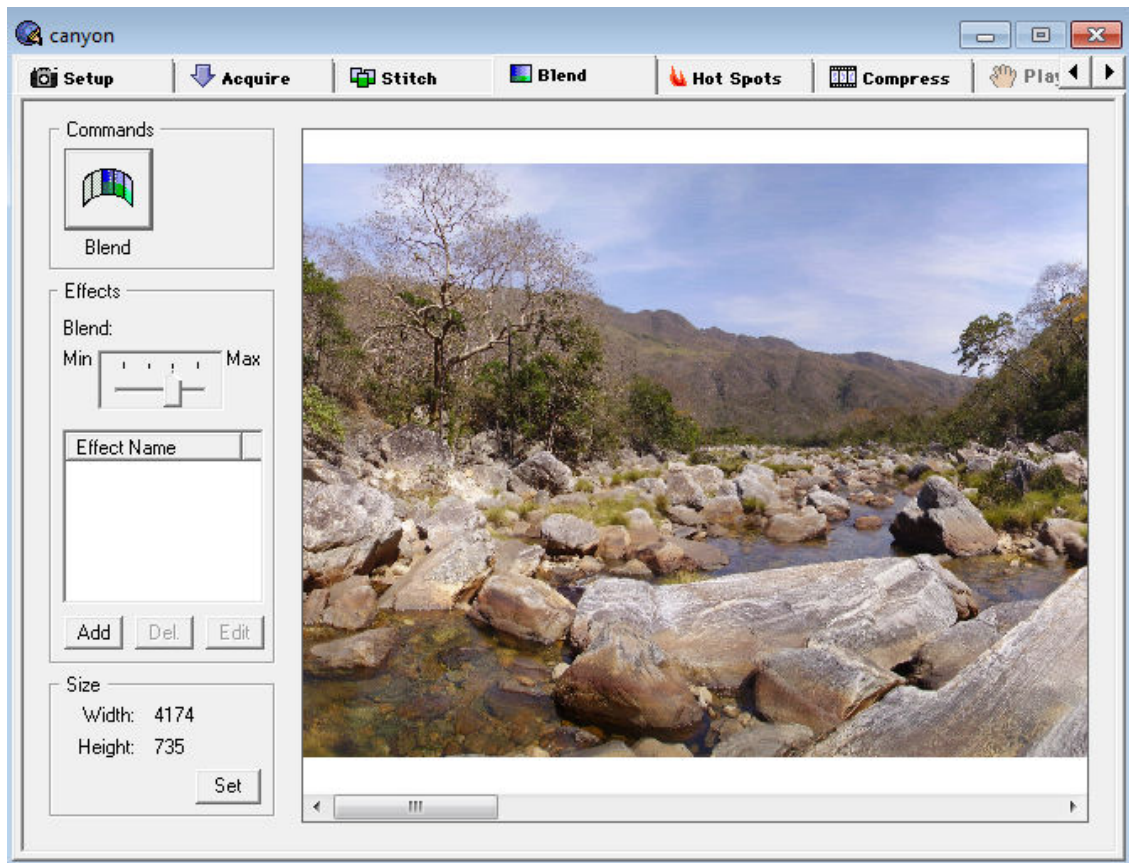


Stitch

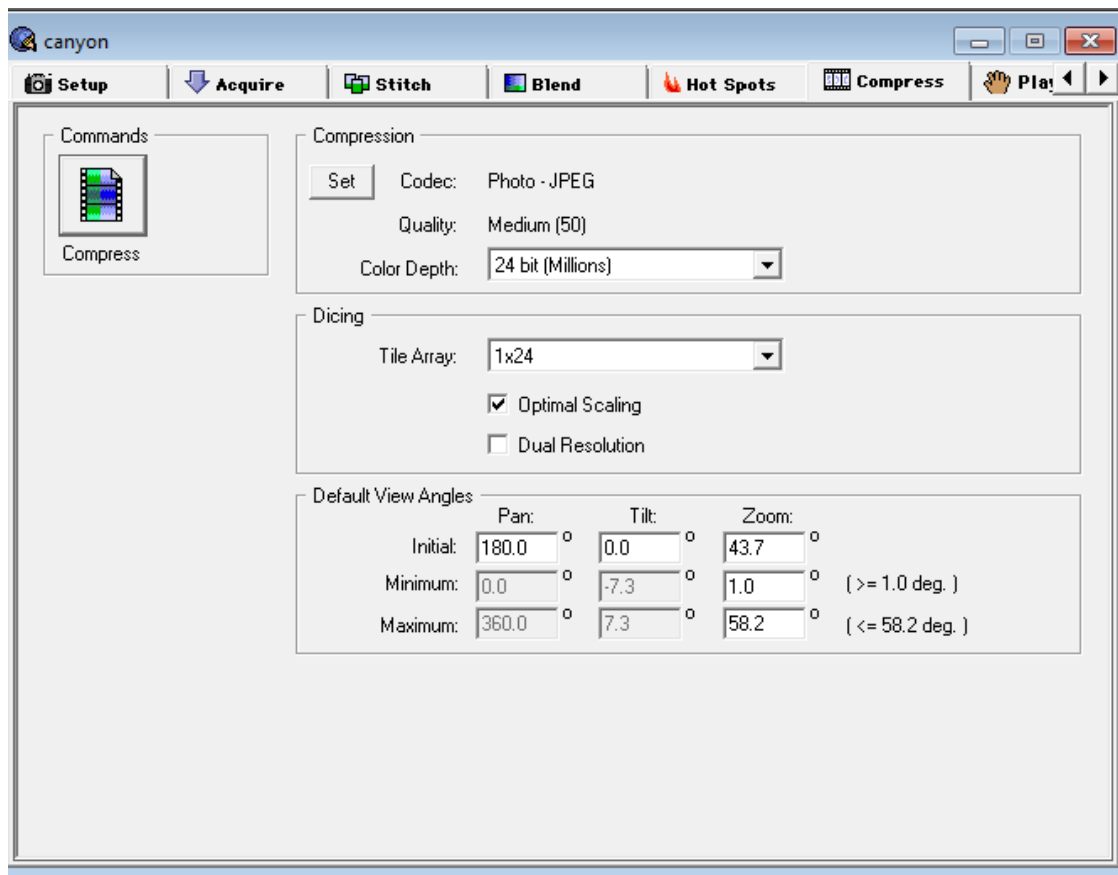




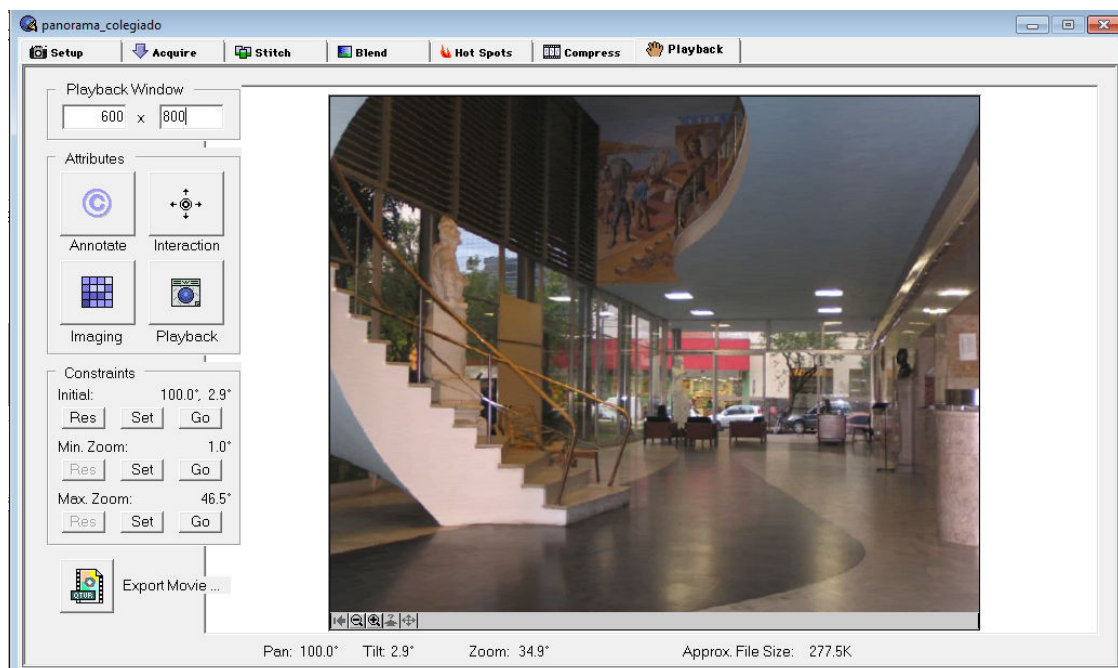
Blend



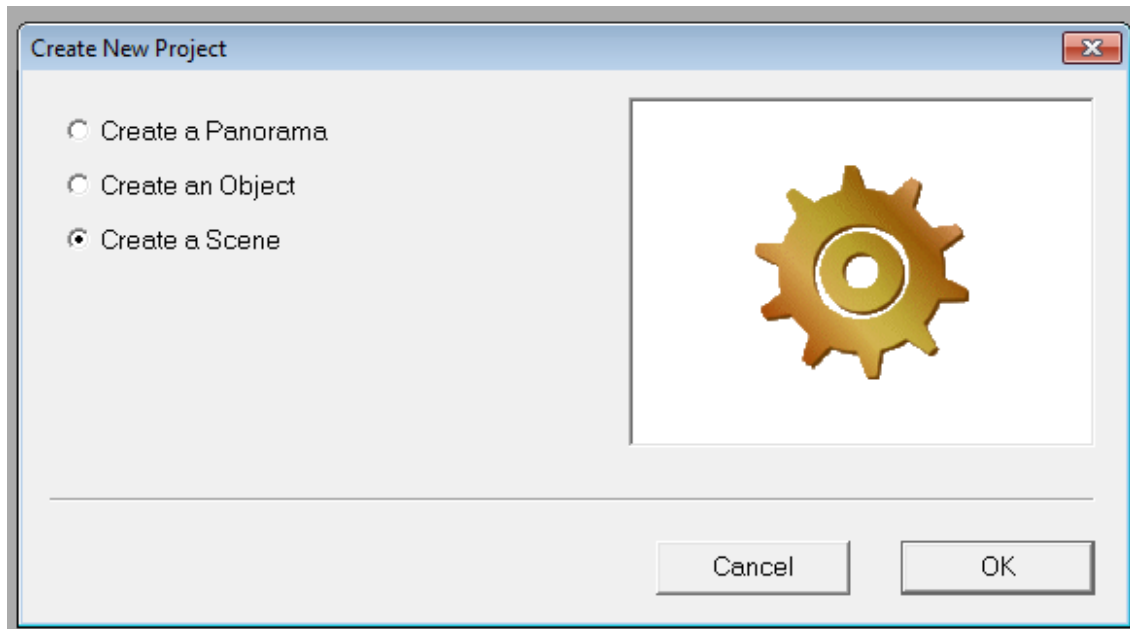
Compress



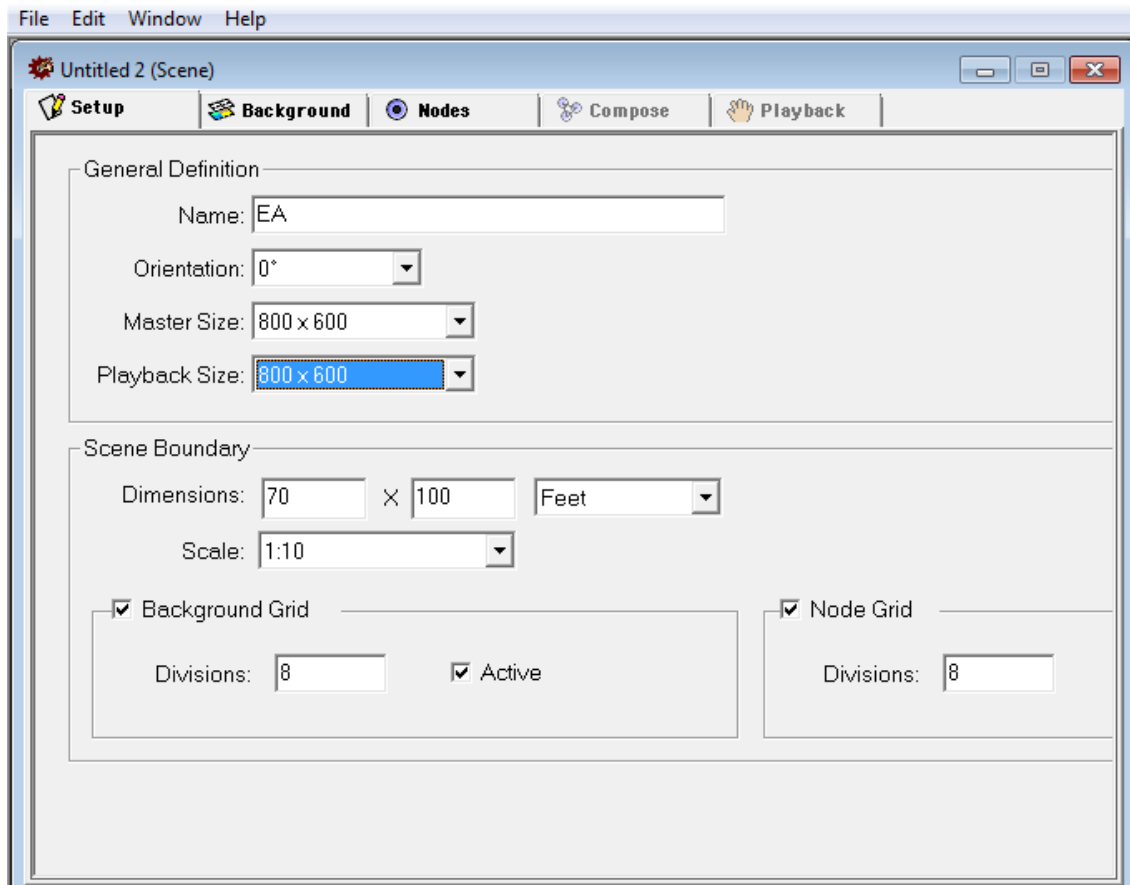
Playback – ExportMovie....



CREATE A SCENE



SETUP



BACKGROUND

